

KERN-EX1/21
IP66/IP67
ZONE 1/21


Description

The KERN is a compact industrial and emergency luminaire designed for ATEX Zone 1/21 hazardous areas. The body is made of robust polycarbonate (RAL 7035) and is UV stable, ensuring long-term durability. The housing is made of opal polycarbonate, which provides effective light diffusion and high impact resistance. The luminaire is available in different chromaticity temperatures to adapt to different environments. The luminaire can be equipped with a dimming function on request. Designed to be mounted and suspended.

ADVANTAGES:

- European product – made in the Czech Republic
- ATEX/IECEX certification – zone 1/21
- Compact size
- Robust IK08 body
- High water and dust resistance IP66/IP67
- UV resistance
- High specific output up to 116 lm/W
- Wide temperature resistance from -30 °C to +50 °C (depending on luminaire variant)
- Control with certified DALI2 driver

Specifications

Operating voltage:

220-240 V / 50/60 Hz AC, 220-240 V DC

Source:

LED, 4000/5000K, CRI +80, MacAdam3

Housing:

Plastic material PC (polycarbonate), colour grey RAL 7035

Cover:

PC (polycarbonate) opal

Fastening:

Direct fixing to the ceiling or wall of the illuminated space by means of two self-locking fixing bracket (standard equipment), self-locking cable suspension on two fixing brackets, cable suspension by means of suspension lugs.

Connection:

Screwless three-pole terminal block, max. wire cross-section 2.5 mm²

Standard equipment:


2x Ex plastic cable gland M20 for cable diameter 7-13 mm incl. gasket, 2x Ex plastic cable plug M20 incl. gasket, 2x fixing bracket (AISI304)


Calculated lifetime – LED modules:

L80B50 Ta 50 – 63 000 h

L90B50 Ta 25 – 110 000 h

KERN-EX1/21 ATEX – Zone 1/21 (FTZÚ 25 ATEX 0017X)

 II 2G Ex eb mb IIC T4 Gb

 II 2D Ex tb IIIC T85°C Db

KERN-EX1/21 IECEx – Zone 1/21 (IECEx FTZÚ 25.0012X)

Ex eb mb IIC T4 Gb

Ex tb IIIC T85°C Db

On request

6500K – colour temperature

SILICONE-FREE – on request (KERN-EX1/21-K)

09 – 3xM25 hole

ND – ON/OFF luminaire

D2 – DALI2 luminaire

NM3A – ON/OFF luminaire + emergency 3h, AUTOTEST

ND3D2 – DALI2 luminaire + emergency 3h, DALI

NNM3A – emergency luminaire 3h, AUTOTEST

NNMD3 – emergency luminaire 3h, DALI

Variants

Number items	Name of variant	Luminous flux (lm)	Specific power luminaires	Power input (W)	Ta (°C)	Dimensions A x B x C (mm)
63584	KERN-EX1/21-J-L04-840-1900-0ND-08-PD	1742	116 lm/W	15	-30°C≤ta≤50°C	395 x 195 x 122
63585	KERN-EX1/21-J-L04-840-1900-0D2-08-PD	1742	116 lm/W	15	-30°C≤ta≤50°C	395 x 195 x 122
63586	KERN-EX1/21-J-L04-840-1900-NM3A-08-PD	1742	116 lm/W	15	0°C≤ta≤35°C	395 x 195 x 122
63587	KERN-EX1/21-J-L04-840-1900-ND3D2-08-PD	1742	116 lm/W	15	0°C≤ta≤35°C	395 x 195 x 122
65509	KERN-EX1/21-J-L04-850-1900-0ND-08-PD	1751	117 lm/W	15	-30°C≤ta≤50°C	395 x 195 x 122
65510	KERN-EX1/21-J-L04-850-1900-0D2-08-PD	1751	117 lm/W	15	-30°C≤ta≤50°C	395 x 195 x 122
65511	KERN-EX1/21-J-L04-850-1900-NM3A-08-PD	1751	117 lm/W	15	0°C≤ta≤35°C	395 x 195 x 122
65512	KERN-EX1/21-J-L04-850-1900-ND3D2-08-PD	1751	117 lm/W	15	0°C≤ta≤35°C	395 x 195 x 122

Luminous flux and luminaire power tolerance ±10%

You can view the variant detail via the item number.

Accessories

KERN protective cage – L04

Item number: **62858**

Product type: **001610-RAL9016**



Pictogram KERN – with escape route to the left

Item number: **62832**

Product type: **009466**



Pictogram KERN – with escape route to the right

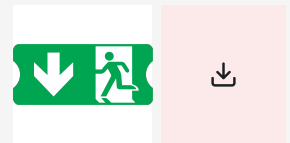
Item number: **62833**

Product type: **009467**



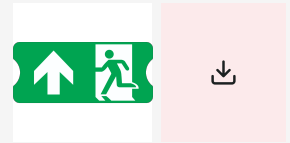
Pictogram KERN – with escape route downstairs

Item number: **62834**
Product type: **009468**



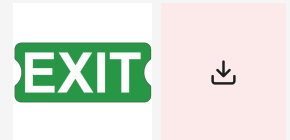
Pictogram KERN – with escape route upstairs

Item number: **62835**
Product type: **009469**



Pictogram KERN – with EXIT

Item number: **62836**
Product type: **009470**



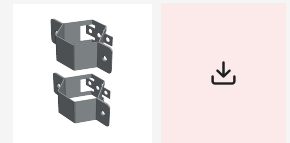
Tightening wrench for cable glands

Item number: **63024**
Product type: **038014**



Set of pole brackets Ø 60 mm (2"), M5, AISI304 (2 pcs)

Item number: **60089**
Product type: **051093**



Set of pole brackets Ø 50 mm (1 1/2"), M5, AISI304 (2 pcs)

Item number: **60090**
Product type: **051094**



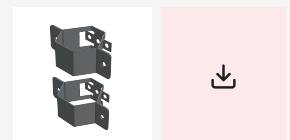
Set of pole brackets Ø 42 mm (1 1/4"), M5, AISI304 (2 pcs)

Item number: **60091**
Product type: **051095**



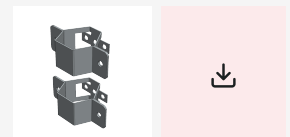
Set of pole brackets Ø 60 mm (2"), M5, AISI316 (2 pcs)

Item number: **66929**
Product type: **051125**



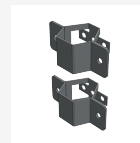
Set of pole brackets Ø 50 mm (1 1/2"), M5, AISI316 (2 pcs)

Item number: **66930**
Product type: **051126**



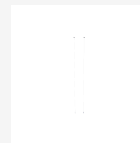
Set of pole brackets Ø 42 mm (1 1/4"), M5, AISI316 (2 pcs)

Item number: **66931**
Product type: **051127**



Cable suspender – 3 m (2 pcs)

Item number: **3575**
Product type: **051131**



Set of wall brackets – angle 45° KERN, AISI304 (2 pcs)

Item number: **63139**
Product type: **051159**



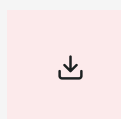
KERN accessories– glands for armored cable

Item number: **63458**
Product type: **051162**



KERN – Grounding washer under cable glands (1 pc)

Item number: **66889**
Product type: **051163**



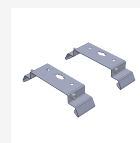
Set of wall brackets – 45° angle, KERN AISI 316 (2 pcs)

Item number: **66937**
Product type: **051164**



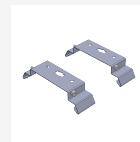
KERN Mounting Pin Set – IK10 – AISI 304 (2 pcs)

Item number: **66947**
Product type: **051165**



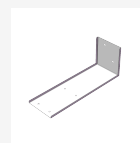
KERN Mounting Pin Set – IK10 – AISI 316L (2 pcs)

Item number: **66948**
Product type: **051166**



Wall bracket

Item number: **6902**
Product type: **061066**



Spare parts**KERN Mounting Pin Set – AISI 304 (2 pcs)**

Item number: **69104**
Product type: **051193**

**KERN Mounting Pin Set – AISI 316L (2 pcs)**

Item number: **69105**
Product type: **051194**

**KERN-EX1 Cover – L04**

Item number: **69103**
Product type: **051274**



© 2026 All rights reserved. VYRTYCH a.s. does not warrant the accuracy or completeness of the information provided herein and is not responsible for any events that may occur as a result of unqualified reliance on this information. The information contained herein does not constitute a commercial offer and does not form part of a quotation or contract, unless confirmed by VYRTYCH a.s..