

TOSA-EX2/21
IP66
EX ZONE 2/21


Description

FLOODLIGHT type luminaire designed for explosion hazardous areas for ATEX ZONE 2/21, 22. Robust aluminium body (RAL 9006) with clear safety glass. The body is made of highly resistant aluminium with a surface treatment guaranteeing extremely high resistance to salty environments. Corrosion resistance C5M. The luminaire's optical system offers a large variation of light curves for different applications. Equipped with high quality electronic components with efficiency up to 140 lm/W. It is characterized by high splash and dust resistance IP66. Suitable for ambient temperatures from -40 °C to +65 °C (depending on luminaire variant). The luminaire is ready for looping. Designed for snap-on (adjustable) mounting and direct mounting on a column. The adjustable boom allows a wide variation in the use of the luminaire.

ADVANTAGES:

- ATEX/IECEX certification ZONE 2/21
- Robust body
- High specific output up to 143 lm/W
- High corrosion resistance C5M
- Performance variants up to 34,330 lm

Specifications

Operating voltage:

100-277 V / 50/60 Hz AC

Source:

LED, 4000K, CRI +80, MacAdam5

Housing:

Aluminium body, grey RAL 7035

Cover:

Clear tempered safety glass

Fastening:

With adjustable boom for attachment (boom is included in the luminaire)

Connection:

Screwless three-pole terminal block, max. conductor cross-section 4 mm²

Standard equipment:

1x Ex brass nickel-plated cable gland M25 for cable diameter 10-18 mm, 1x Ex brass nickel-plated plug M25

Calculated lifetime – LED modules:

L80B50 Ta 25 – 230 000 h

TOSA-Ex2/21 ATEX zone 2/21 (TÜV 25 ATEX 9256X/9255X)

 II 3G Ex nR IIC T6/T5 Gc

 II 2D Ex tb IIIC T80°C/T95°C Db

TOSA-Ex2/21 IECEx zone 2/21 (IECEx TUR 25.0015X)

Ex nR IIC T6/T5 Gc

Ex tb IIIC T80°C/T95°C Db

On request

Variants

Number items	Name of variant	Luminous flux (lm)	Specific power luminaires	Power input (W)	Ta (°C)	Dimensions A x B x C (mm)
63716	TOSA-EX2/21-F-B01-840-23400-0ND-15-LB	19706	131 lm/W	150	-40°C≤ta≤55°C/65°C	440 x 420 x 80
63717	TOSA-EX2/21-F-B01-840-29700-0ND-15-LB	26124	131 lm/W	200	-40°C≤ta≤50°C/60°C	440 x 420 x 80
63718	TOSA-EX2/21-F-B01-840-35100-0ND-15-LB	29780	124 lm/W	240	-40°C≤ta≤50°C	440 x 420 x 80
63719	TOSA-EX2/21-F-B01-840-23400-0ND-15-LM	22378	149 lm/W	150	-40°C≤ta≤55°C/65°C	440 x 420 x 80
63720	TOSA-EX2/21-F-B01-840-29700-0ND-15-LM	29666	148 lm/W	200	-40°C≤ta≤50°C/60°C	440 x 420 x 80
63721	TOSA-EX2/21-F-B01-840-35100-0ND-15-LM	33818	141 lm/W	240	-40°C≤ta≤50°C	440 x 420 x 80
63722	TOSA-EX2/21-F-B01-840-23400-0ND-15-LS	21169	141 lm/W	150	-40°C≤ta≤55°C/65°C	440 x 420 x 80
63723	TOSA-EX2/21-F-B01-840-29700-0ND-15-LS	28063	140 lm/W	200	-40°C≤ta≤50°C/60°C	440 x 420 x 80
63724	TOSA-EX2/21-F-B01-840-35100-0ND-15-LS	31991	133 lm/W	240	-40°C≤ta≤50°C	440 x 420 x 80
63725	TOSA-EX2/21-F-B01-840-23400-0ND-15-LW	22717	151 lm/W	150	-40°C≤ta≤55°C/65°C	440 x 420 x 80
63726	TOSA-EX2/21-F-B01-840-29700-0ND-15-LW	30115	151 lm/W	200	-40°C≤ta≤50°C/60°C	440 x 420 x 80
63727	TOSA-EX2/21-F-B01-840-35100-0ND-15-LW	34330	143 lm/W	240	-40°C≤ta≤50°C	440 x 420 x 80
63728	TOSA-EX2/21-F-B01-840-23400-0ND-15-AE	20913	139 lm/W	150	-40°C≤ta≤55°C/65°C	440 x 420 x 80
63729	TOSA-EX2/21-F-B01-840-29700-0ND-15-AE	27724	139 lm/W	200	-40°C≤ta≤50°C/60°C	440 x 420 x 80
63730	TOSA-EX2/21-F-B01-840-35100-0ND-15-AE	31604	132 lm/W	240	-40°C≤ta≤50°C	440 x 420 x 80
63731	TOSA-EX2/21-F-B01-840-23400-0ND-15-AG	20755	138 lm/W	150	-40°C≤ta≤55°C/65°C	440 x 420 x 80
63732	TOSA-EX2/21-F-B01-840-29700-0ND-15-AG	27514	138 lm/W	200	-40°C≤ta≤50°C/60°C	440 x 420 x 80
63733	TOSA-EX2/21-F-B01-840-35100-0ND-15-AG	31365	131 lm/W	240	-40°C≤ta≤50°C	440 x 420 x 80

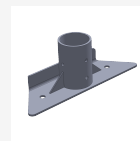
Luminous flux and luminaire power tolerance ±10%

You can view the variant detail via the item number.

Accessories

TOSA adapter for pipe Ø 60 mm (2")

Item number: **63763**
Product type: **035202**



Nickel plated gland Ex M25x1,5 – TOSA-EX2/21

Item number: **75376**
Product type: **051257**



© 2026 All rights reserved. VYRTYCH a.s. does not warrant the accuracy or completeness of the information provided herein and is not responsible for any events that may occur as a result of unqualified reliance on this information. The information contained herein does not constitute a commercial offer and does not form part of a quotation or contract, unless confirmed by VYRTYCH a.s..